

Programming

Please follow the steps below to Learn in remotes to the receiver's relevant relay channel. The unit can store up to 40 remotes per relay. When memory has reached its limit the unit will automatically exit out of program mode and sound a long beep. The unit auto exits after 10 seconds.

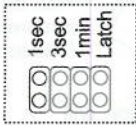
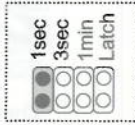



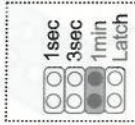

<p>Step 1.</p>  <p>1 beep</p> <p>Enters Learn mode</p>	<p>Step 2.</p>  <p>2 beeps</p> <p>Press button twice</p>	<p>Step 3.</p>  <p>1 beep</p> <p>Advances to Relay 2</p>	<p>Step 4.</p>  <p>2 beeps</p> <p>Press button twice</p>	<p>Step 5.</p>  <p>Long beep</p> <p>Exits from Learn</p>
---	--	--	--	--

Programming On/Off Function

This function enables the receiver to be programmed with a button to turn the relay ON and a different button to turn the relay OFF.

<p>Step 1.</p>  <p>2 beeps</p> <p>Enters Learn for ON/OFF</p>	<p>Step 2.</p>  <p>3 beeps</p> <p>Learn ON signal Press button twice</p>	<p>Step 3.</p>  <p>3 beeps</p> <p>Enters Learn mode for OFF code</p>	<p>Step 4.</p>  <p>6 beeps</p> <p>Learn OFF signal Press button twice</p>	<p>Step 5.</p>  <p>Long beep</p> <p>Press twice to Exit</p>
--	--	--	--	---

Relay time settings

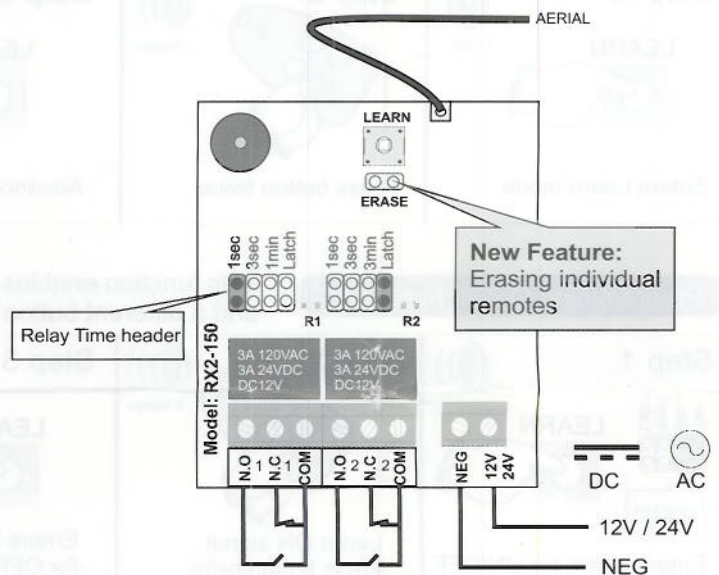
<p>0.5 Second</p>  <p>Garage door automation</p>	<p>1 Second</p>  <p>Gate & garage door automation</p>	<p>3 Seconds</p>  <p>Panic on alarm panel</p>	<p>30 Seconds</p>  <p>Maglock release / beam bypass</p>	<p>Latch & Unlatch</p>  <p>Arming & Disarming alarm panels</p>	<p>Relay 1 = 1 Minute Relay 2 = 3 Minute</p>  <p>Siren output or beam bypass</p>	<p>On / Off</p>  <p>Code 1 = ON Code 2 = OFF</p>
---	--	--	--	--	--	---

2-Channel Receiver: 150m Code-Hopping

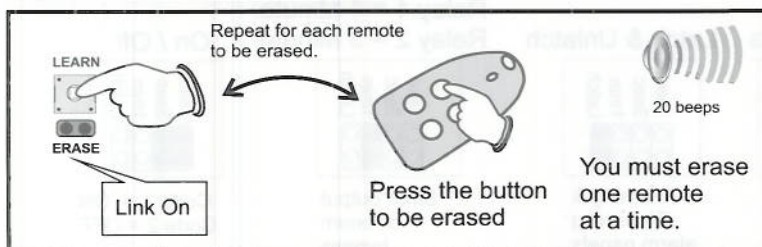
Model No: **RX2-150**

SPECIFICATIONS:

Encryption.....	Keeloq Code-Hopping
Frequency.....	403.55MHz
Receiving range.....	150m
Power input range.....	10 ~ 26V AC/DC
Current drain.....	13mA, 12VDC
Memory capacity.....	40 Remotes per Channel
Relay output times.....	0.5 second momentary
.....	1 second momentary
.....	3 / 30 second momentary
.....	Latching
.....	On / Off function
.....	1 & 3 Minute
Dimensions.....	100 X 60 x 25mm
Weight Packed.....	0.078kg / 78grams
Warranty.....	1 year
PCB Revision no.....	RX2-150_V2.02
Release date.....	Nov 2012



Erasing Individual remotes.



Defaulting.

