

WLX-40 and WLX-80 XWAVE² Detector

WLX Features

- WLX-40: 12m 120 Wide angle
- WLX-80: 24 m Long range
- Pet-alley mode
- Selectable pulse count via keypad
- LED on/off selection via keypad
- Walk test selection via keypad
- IDS Xwave² bi-directional wireless
- Quad Zone Logic detection
- CR123A battery
- IP rating: IP 54

Detection Area

WLX-40

Multi-level Side View

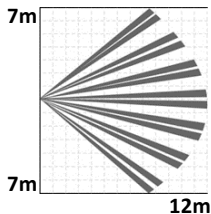
2.5m



Pet-alley Side View



Top View



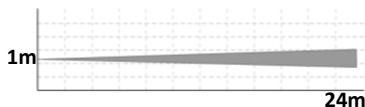
WLX-80

Multi-level Side View

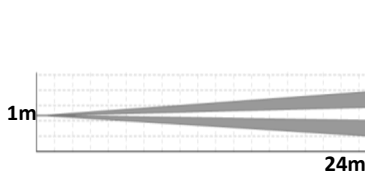
2.5m



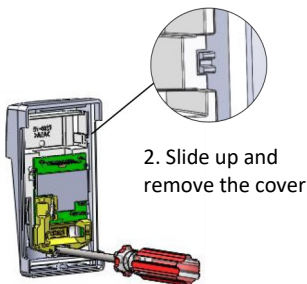
Pet-alley Side View



Top View

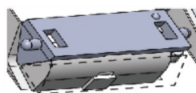


Selecting Pet-Alley Mode

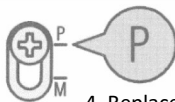


1. Remove the inside screw

2. Slide up and remove the cover

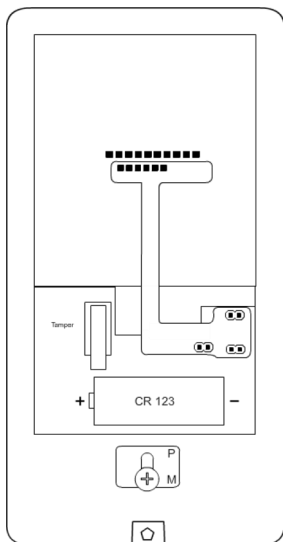


3. Flip the mirror up



4. Replace the cover and fix to the P position

Detector Settings



Detector settings are set from the IDS panel keypad using bi-directional communication.

Walk Test

To bypass the delay time of 120 seconds when doing a walk test insert the jumper.
Note: To conserve battery life remove the walk function once all tests are complete.

LED

To conserve power the detection LED can be switched off via the keypad.

Pulse Count

The pulse count helps prevent false alarms by setting the number of detection zones that must detect infrared heat before registering a violation.

Set the count to 4 for harsh environments.

P & M Adjustment Screw

P position sets detector to Pet-alley mode
M position sets detector to Multi-level mode