

Introduction

The IDS DTMF Radio Interface module is a stackable board for the new generation IDS alarm system. The IDS DTMF Radio Interface module communicates to other DTMF communication devices that transmit signals from the alarm system to the security companies control room, via DTMF tones.

Connection Diagram

Status LEDs

PWR LED

On solid when the DTMF module has power.

TXD LED

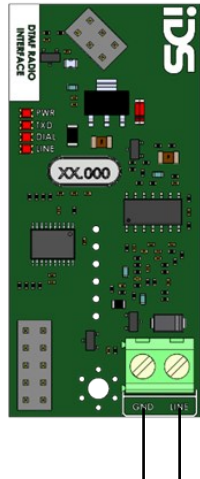
The LED will illuminate when transmitting to the radio.

Dial LED

Comes on when dialling the radio until the radio completes the data transfer.

LINE LED

The LED will illuminate when a voltage on the line & ground connection is detected.

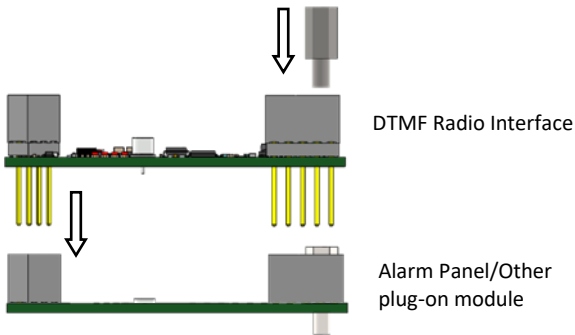


Connect your Contact ID radios Line/Tip to the DTMF modules Line & your radios Ground/Ring to the DTMF modules Ground

Installation

Plug the module into the alarm panels connectors. Screw the plug-on module to the system with the standoff supplied to ground the plug-on module to the system.

Do not plug the module in while the system is powered on.



Do not connect any telephone system to the DTMF module as this will cause damage – this is a Radio/GSM board only.